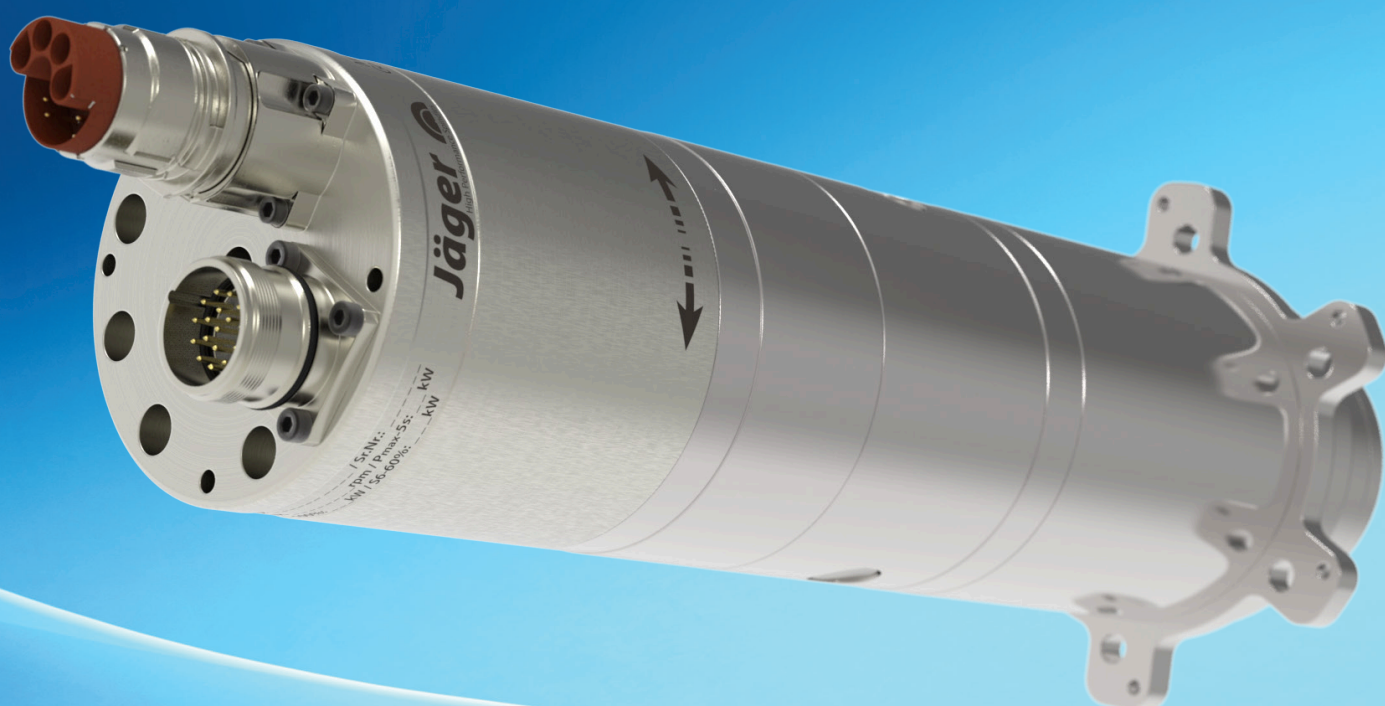


Nakanishi Jaeger GmbH



High-Frequency Spindles

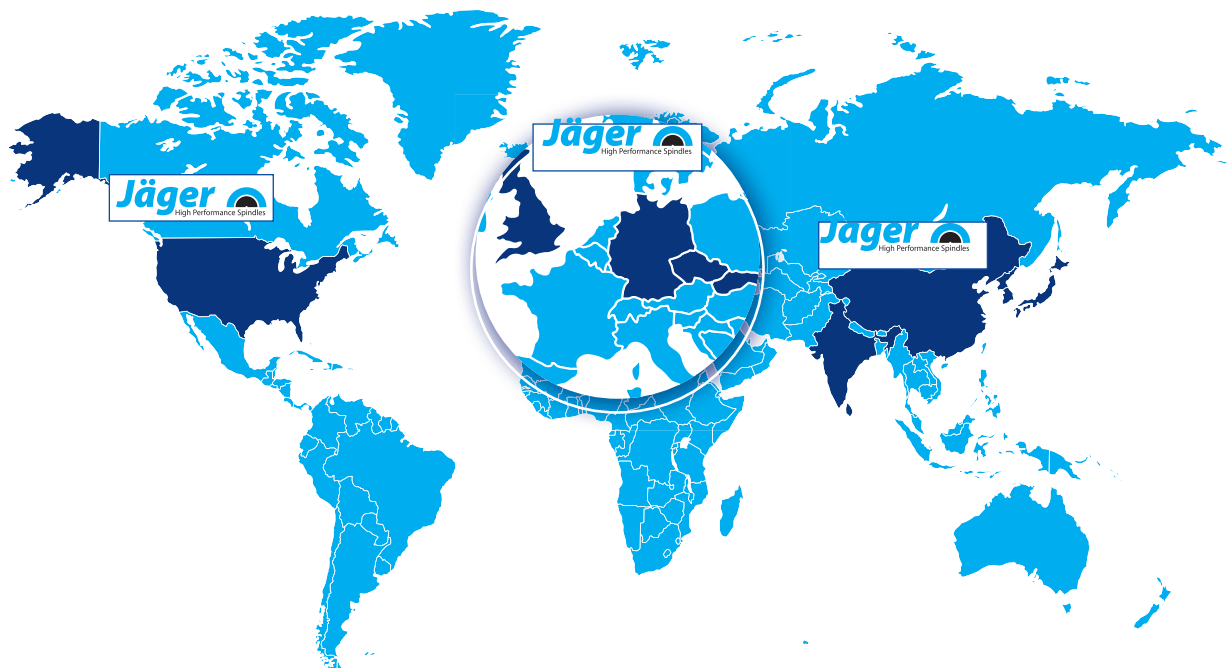
Nakanishi Jaeger

Nakanishi Jaeger is a leading company specializing in the development and manufacture of high-quality spindle systems and motors. With many years of experience and technical know-how, we offer innovative solutions to meet the requirements of our target groups. Our products help to increase efficiency, precision and productivity and are designed for top performance.

Nakanishi Jaeger is characterized by its high level of expertise and technological excellence. Our focus is on offering solutions tailored precisely to the individual requirements. Our broad product portfolio includes a variety of spindles and motors for use in various industries and applications.



Nakanishi Jaeger at a glance



COMPANY OVERVIEW

Based in Germany, Nakanishi Jaeger is a leading global manufacturer of high-frequency spindles and high-performance motors.

More than 50 years of experience in manufacturing high-frequency spindles and high-performance motors with unrivalled expertise and innovational capabilities.

Well-established product portfolio with "customized" high-quality high-frequency spindles for various application areas, i.e. dental technology, precision cutting, conductor boards and robot applications.

Comprehensive after-sales services via an established global distribution and services network in more than ten countries.

Nakanishi Jaeger is an innovation leader and continuously invests into research and development to improve existing solutions and develop new market innovations.

Products



Z line And Power line



F line



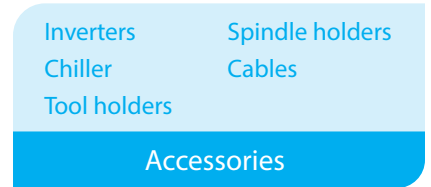
Chopper line



ARS line



Block line



Accessories

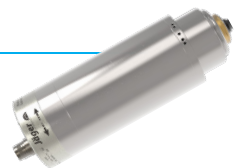
Z Line / Power line

Features

- Cylindrical housing
- AC/DC Motors
- Hybrid spindle bearings lifetime lubricated
- Run out – Accuracy < 1μ
- Manual / Pneumatic Tool Change

Options

- Encoder
- MQL
- Internal coolant supply up to 140bar
- Expansion shaft sensor
- Thermal bearings monitoring



Z Line / Power Line						
Housing Diameter	33mm	42/45 mm	62mm	80mm	100mm	120mm
Manual Tool Change	ER8 - ER11	ER8 - ER11	ER11 - ER16 HSK-C25	ER16 - ER25 HSK-C32	HSK-C40	HSK-C50
Pneumatic/Hydraulic Taper Change	-	-	HSK-E25	HSK-E25-E32	HSK-E25-E50	HSK-E50/F63
Pneumatic Direct Change	Jaeger collet	Jaeger collet	Jaeger collet	Jaeger collet	-	-
Power S1/100%	230W - 430W	300W - 700W	1,6kW - 5kW	1,8kW - 4,4kW	5kW - 10kW	16kW - 18kW
Cooling	No	No	Liquid	Liquid	Liquid	Liquid
Speed max	100,000rpm	60,000rpm	80,000rpm	45,000rpm	42,000rpm	24,000rpm

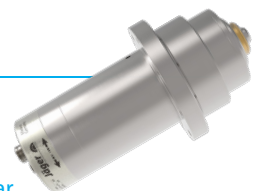
F-Line

Features

- Customized Flange Types
- AC/DC Motors
- Steel – Ceramic ball bearings lifetime lubricated
- Run out – Accuracy < 1μ
- Manual / Pneumatic / Hydraulic taper change

Options

- Encoder
- MQL
- Internal coolant supply up to 140bar
- Expansion shaft sensor
- Thermal bearings monitoring



F Line			
Housing Diameter	80mm	100mm	120mm
Manual Tool Change	HSK-C32	HSK-C40	-
Pneumatic Taper Change	HSK-E25	HSK-E40	HSK-E50-F63
Power S1/100%	5kW	5kW - 10kW	12kW - 18kW
Cooling	Liquid	Liquid	Liquid
Speed max	45.000rpm	36.000rpm	30.000rpm

Chopper Line

Features

- Spindles at an attractive price
- Aluminium housing
- T-Slot mounting
- DC Motors
- Fan cooling
- Steel ball bearings lifetime lubricated
- Manual / Pneumatic tool change
- Run out – Accuracy < 2µ

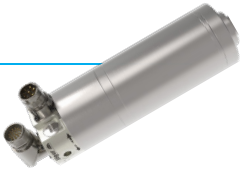


Chopper Line				
Housing Diameter	33mm	80mm	100mm	140x140mm
Manual Tool Change	ER11	ER20	ER16 - ER25	-
Pneumatic Taper Change	-	-	HSK-E25/E32	HSK-E50/F63
Power S1/100%	250W	2kW	1,5kW - 5kW	6,5kW
Cooling	No	Liquid	Fan integrated	Fan integrated
Speed max	50.000rpm	30.000rpm	30.000rpm	24.000rpm

ARS Line (Dressing)

Features

- Spindles for profiling and dressing grinding wheel
- Cylindrical spindle housing
- High rigidity and precision
- AC/DC Motors
- Manual tool interface
- Encoder
- Marposs-Dittel-SBS sensors for spark detection
- Run out – Accuracy < 1µ



ARS Line (Dressing)			
Housing Diameter	33mm	42mm	72mm
Tool interface for dressing	Yes	Yes	Yes
Power S1/100%	250W	250W	0,7 - 3,5kW
Cooling	No	Liquid	Liquid
Speed max	60.000rpm	46.000rpm	16.000rpm

Block Line

Features

- Customized block housing
- Swiveling 360° spindle for milling heads - robot
- High rigidity and precision
- Manual / Pneumatic / Hydraulic taper change
- Run out – Accuracy < 1µ



Block Line		
Housing	65mm	150mm
Tool interface	Flange	HSK-E40
Power S1/100%	1,4kW	10,9kW
Cooling	Air compressed	Liquid
Speed max	20.000rpm	26.000rpm

Industry and application

GRINDING TECHNOLOGY

The diverse fields of application for grinding technology also require a high level of flexibility for a grinding spindle, drilling spindle, milling spindle, or rotating spindle. Our spindle systems can be used in a diverse range of applications and work precisely and reliably in every field.

- Z Line
- ARS Line



MACHINE TOOL

Machine tools have a special place in the manufacturing industry, as almost every workpiece is an individual piece. The manufacturing requirements are often complex and require a high level of flexibility and reliability of the rotating spindle used.

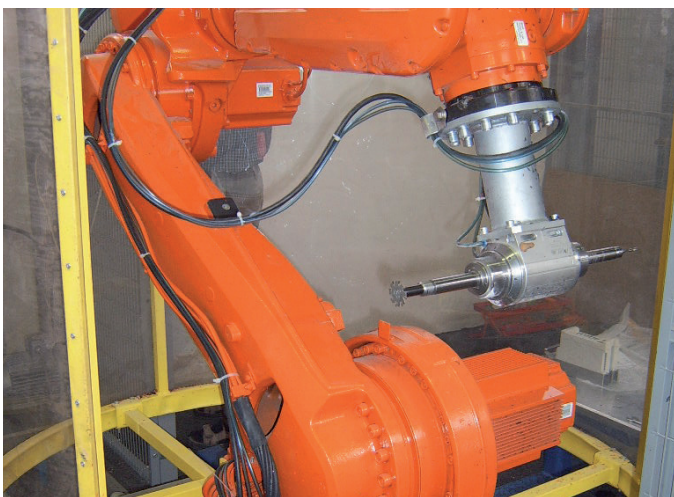
- Z Line
- F Line
- Chopper Line
- Block line



ROBOT APPLICATION

Processing of material with a robot presents extremely high demands on the spindle system used. Absolute precision is paramount. Our high-frequency spindles are the right choice here with regard to weight, interfering contour, and bearing rigidity.

- Z line
- Chopper Line
- Block line



DENTAL CAD CAM

Modern milling units in dental technology have to show what fully automated production in an extremely small space can provide with a dental spindle: up to 7 transversing axes are available for processing tasks

- Z Line





NAKANISHI JAEGER GMBH

Siemensstrasse 8
61239 Ober-Mörlen
GERMANY

Tel.: +49 (0)6002 / 9123 - 0
Fax: +49 (0)6002 / 9123 - 40
E-mail: sales@nakanishi-jaeger.com